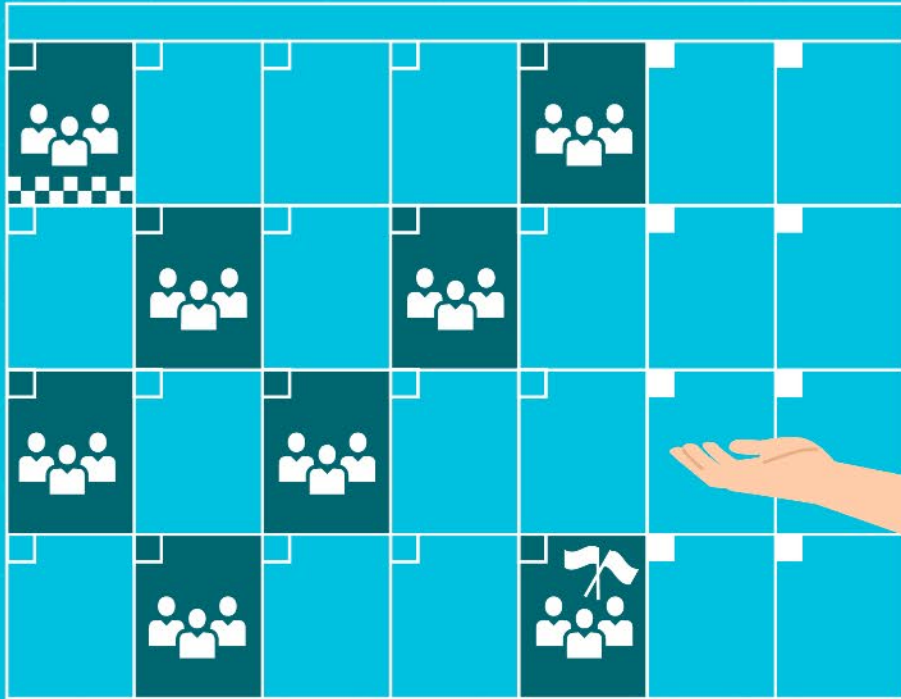


# SITRAIN Learning Journey

Sustainable learning success  
in just a few weeks



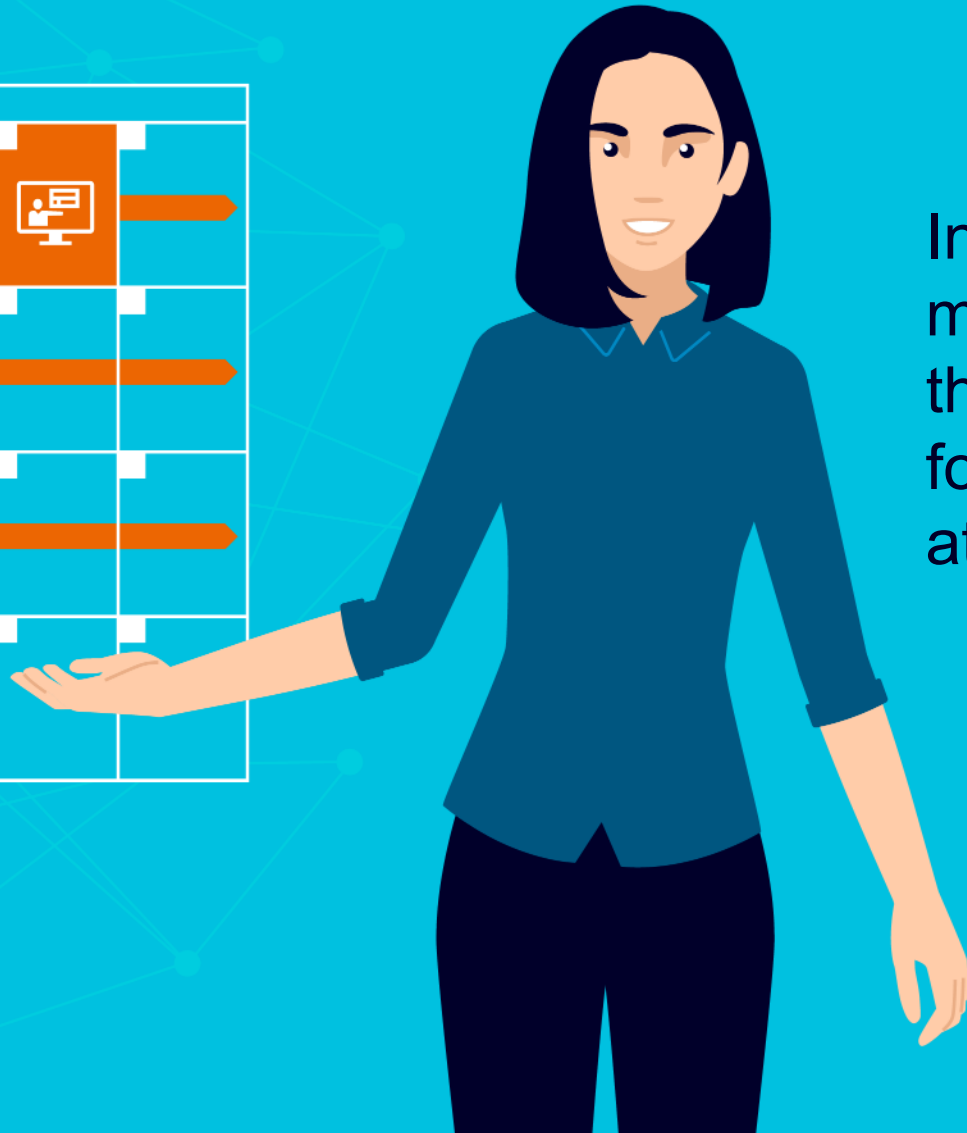
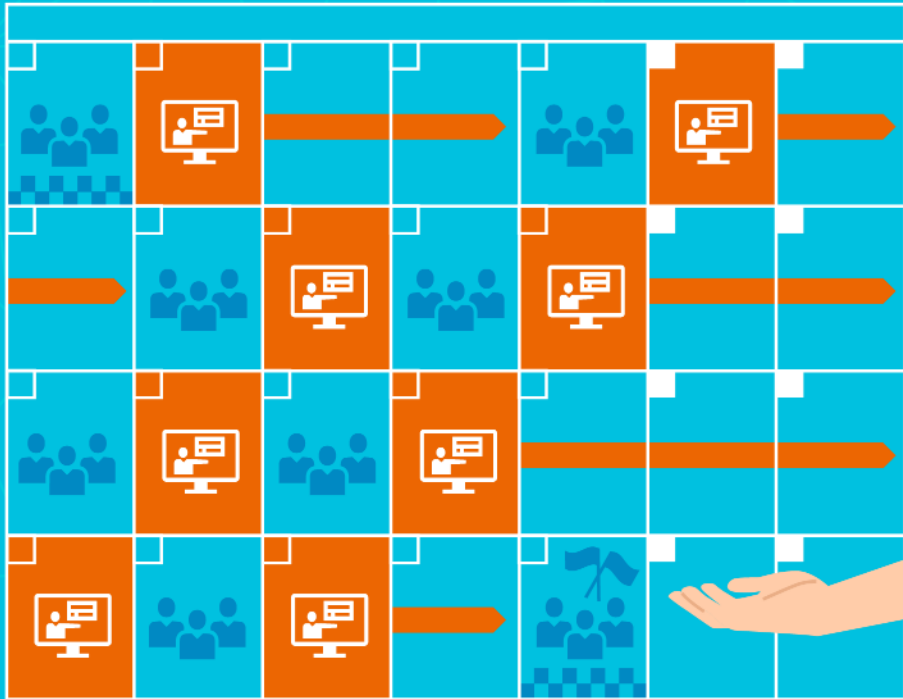
A Learning Journey combines live modules, self-learning modules and on-demand content with individualized, practical support in coaching sessions.



Live Modules take place several times a week and are one to four hours long.

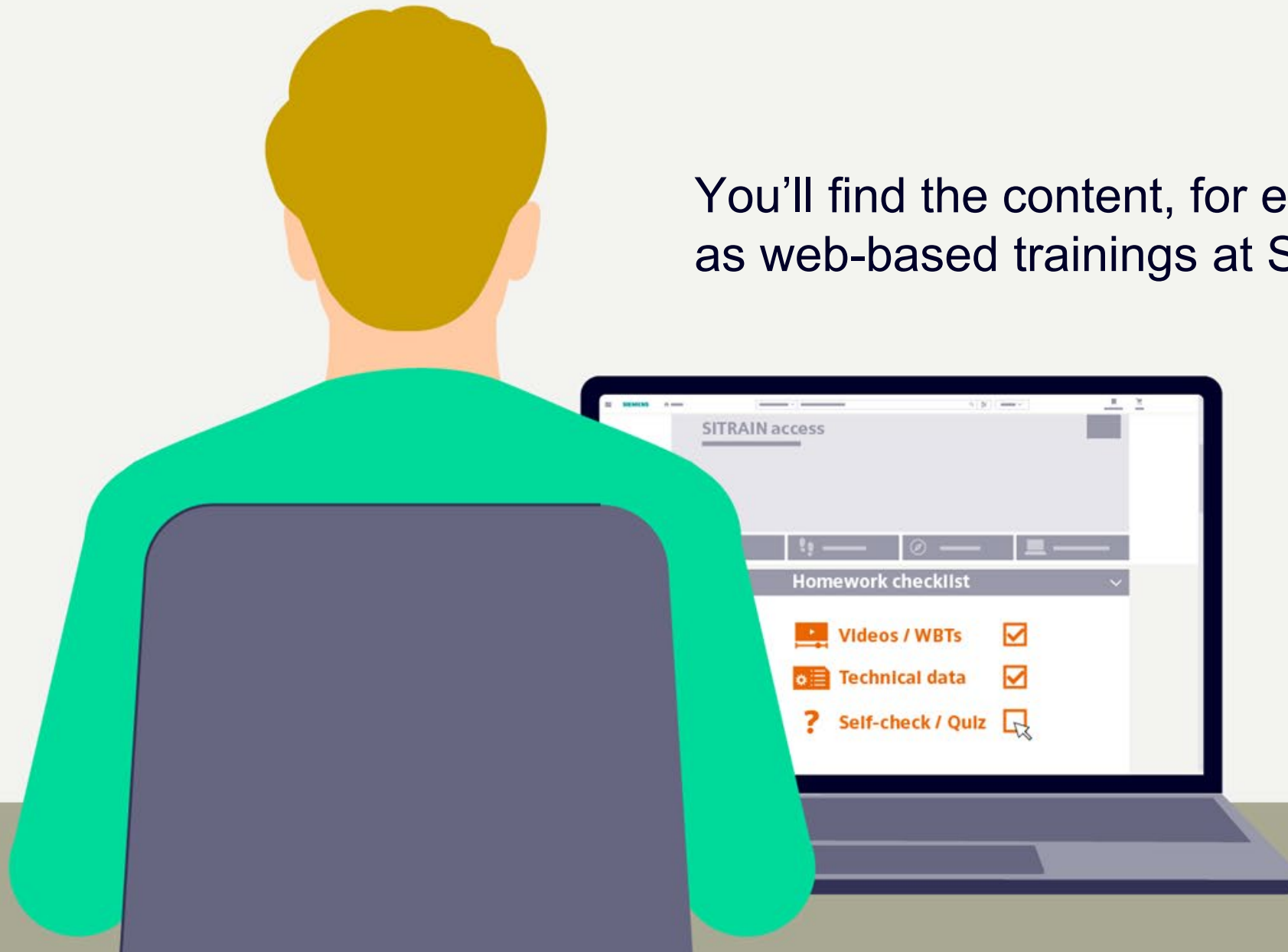


You'll meet simultaneously with other learners and a learning consultant in a virtual classroom.



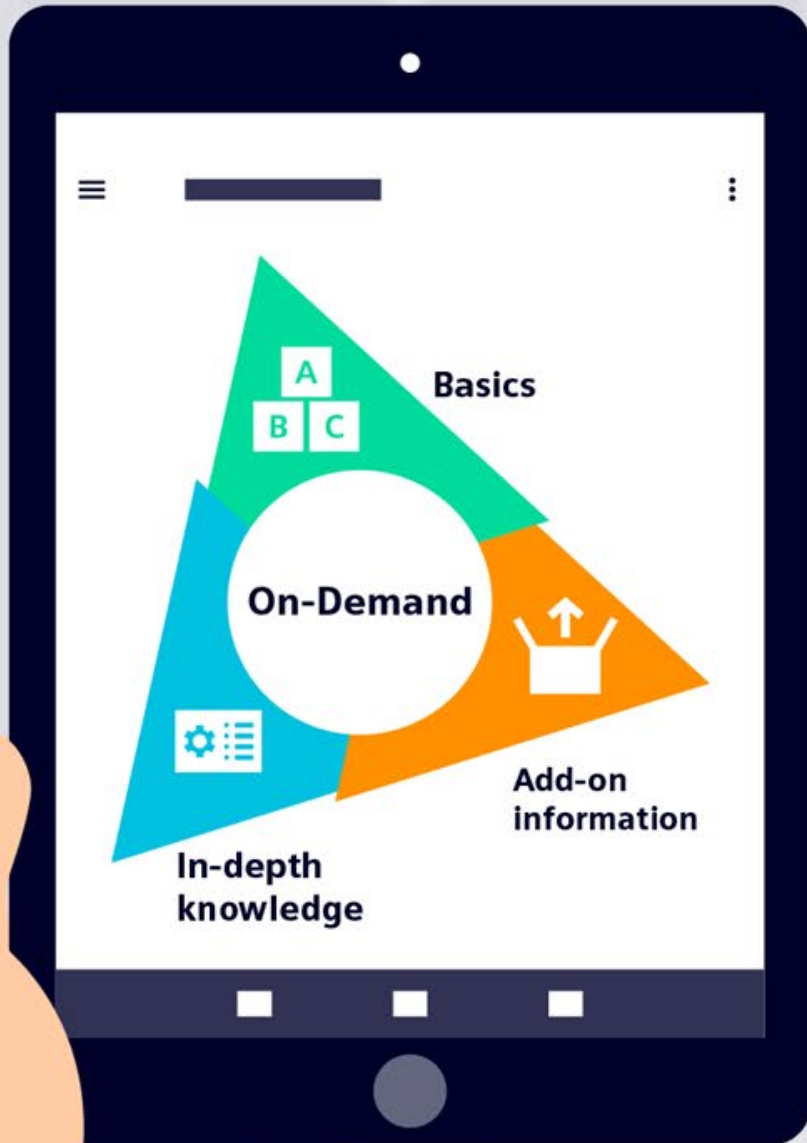
In the self-learning module, you'll process the content necessary for the next live module at your own pace.

You'll find the content, for example,  
as web-based trainings at SITRAIN access.





On-demand content is available throughout the Learning Journey and far beyond.



It allows you to deepen your knowledge, pursue side topics, and strengthen the basics with materials selected by our specialists.

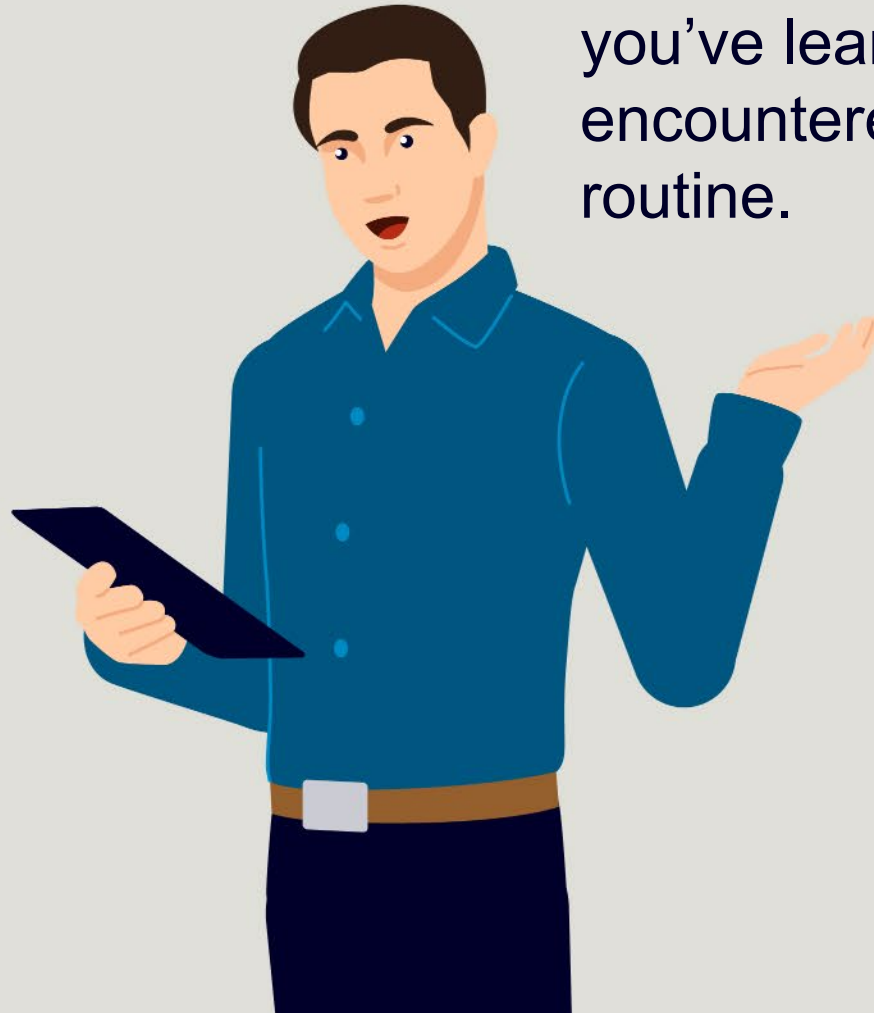




You can also participate in coaching sessions during the Learning Journey and beyond.



In dialogue with the learning consultant, you can apply what you've learned to specific tasks encountered in **your** daily work routine.





Thanks to the ideal combination of four learning methods –

- 👥 live
- 📺 self-learning
- 📱 on-demand
- ⚙️ individual

the Learning Journey provides the best possible conditions for sustainable and successful learning!

# Disclaimer

© Siemens 2023

Subject to changes and errors. The information given in this document only contains general descriptions and/or performance features which may not always specifically reflect those described, or which may undergo modification in the course of further development of the products. The requested performance features are binding only when they are expressly agreed upon in the concluded contract.

All product designations may be trademarks or other rights of Siemens AG, its affiliated companies or other companies whose use by third parties for their own purposes could violate the rights of the respective owner.